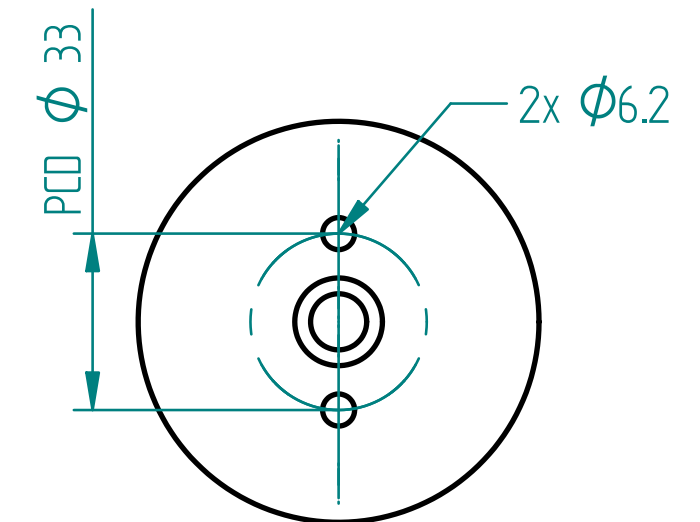
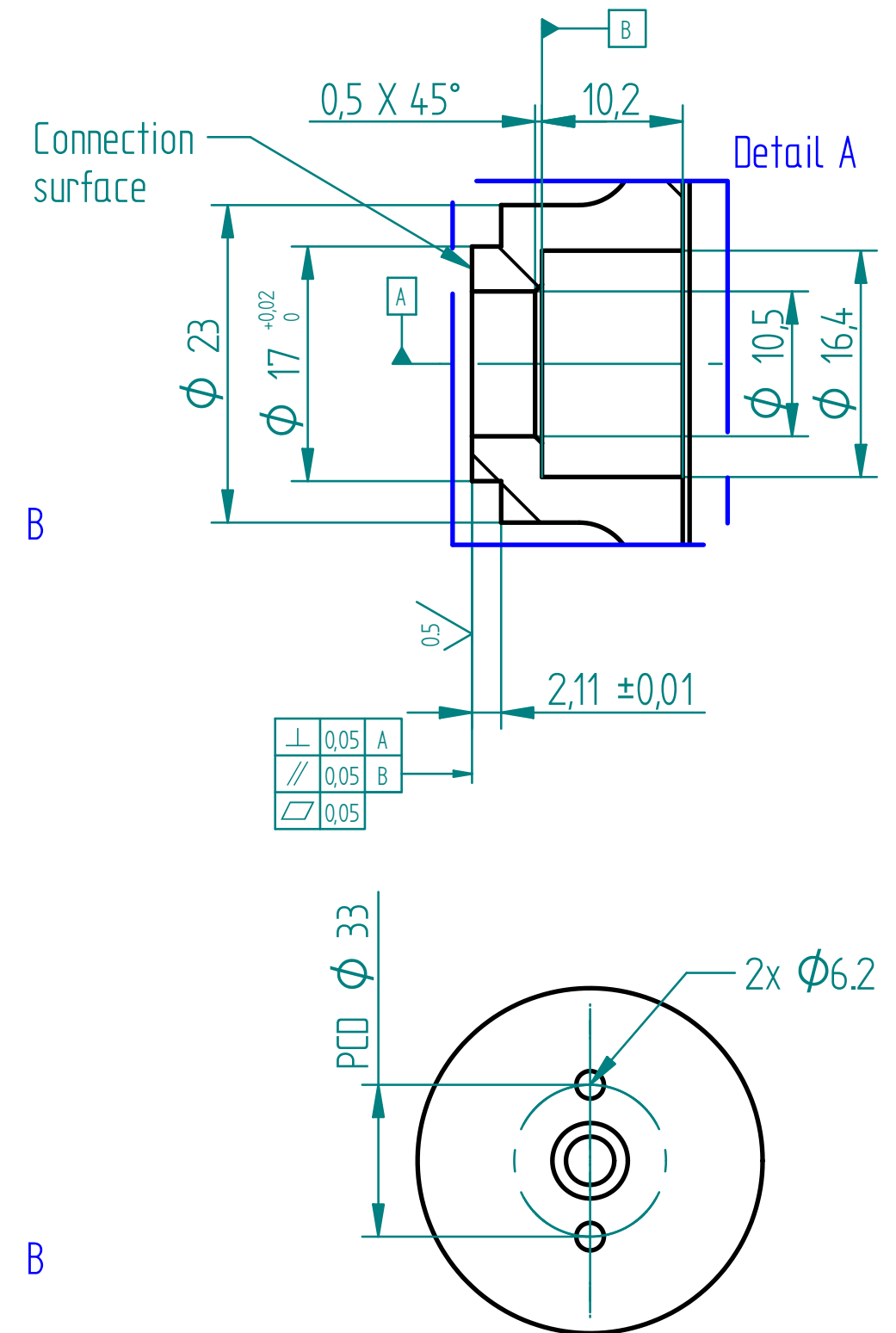
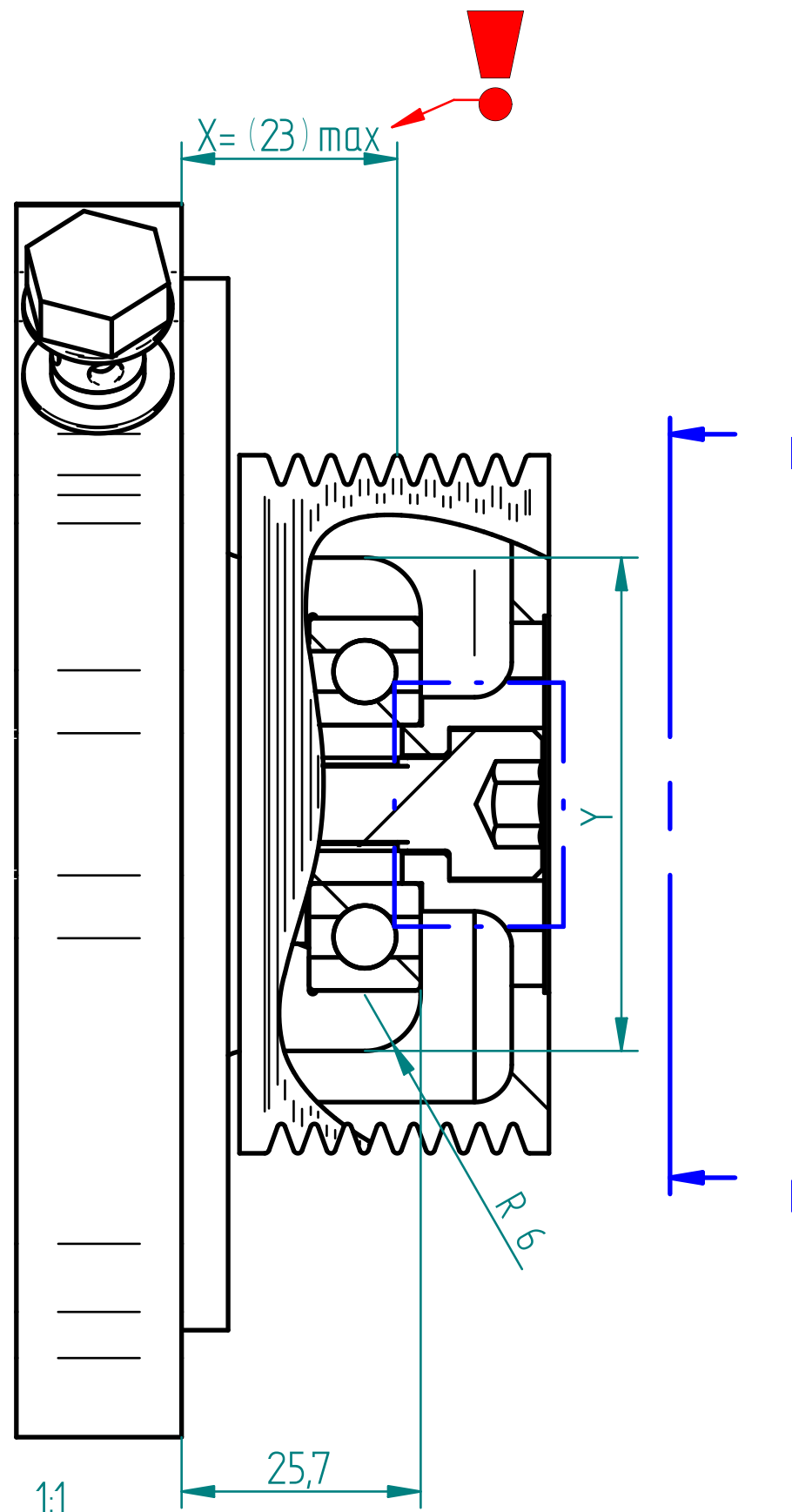


C-range Pulley design guide

Design requirements

- **! Center of belt must be placed as close as possible to S/C and the distance X should never be more than 23mm**
Not meeting this demand will void warranty and cause significant damage to the S/C.
- Nose diameter Y:
C15=ø48 C30=ø53 C38=ø50
- Pulley should be made from steel.
- Use surface treatment that does not significantly reduce friction coefficient
- Pulley bolt: DIN912 M10x20 grade 12.9
- Pulley bolt tightening torque 50 Nm
- Connection surface on Pulley and S/C must be clean when mounting.
- Not specified tolerances +/- 0.1
- Section B-B shows optional assembly and disassemble feature to use with "Rotrex Pulley unmounting tool"



Optional - SECTION B-B
1:2

ROTREX™

Measurements in mm
Surface finish in Ra

Herlev Hovedgade 17
DK-2730 Herlev Denmark
Tel. (+45) 70 80 70 05
Telefax (+45) 70 80 70 06